

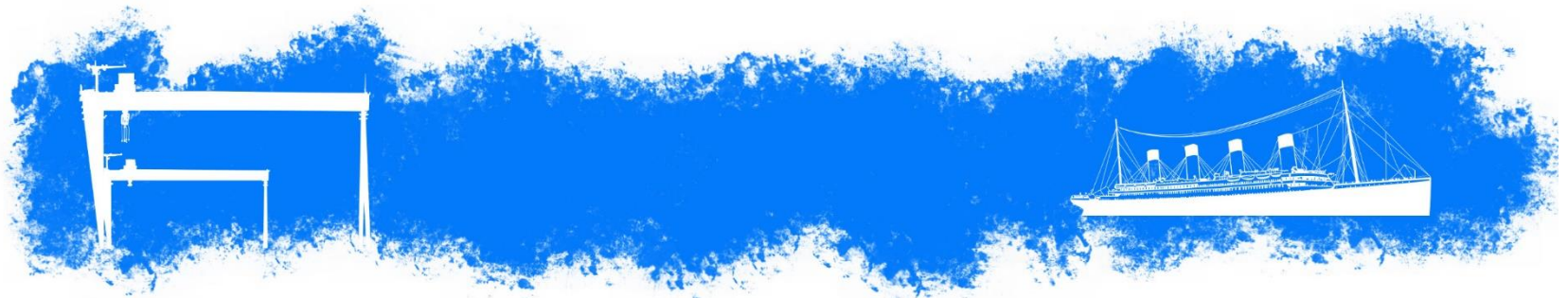


5 - 6 May 2016
Titanic Centre, Belfast

Level 2 on the AMU

Siobhan Burke, Matron ADU
Vicky Mummery, Respiratory Physiotherapist
Katie Warmington, Junior Sister ADU

St George's University Hospitals NHS Foundation Trust





The history of ADU

- Relocation of AMU in 2012 to new unit which included 8 bedded area for high dependency patients
- Allocated ADU specific nurses were phased out after a period of time
- In 2015 there was a drive to re-establish the ADU team which was led by the current Matron
- Commissioners agreed to funding 4 of the 8 beds as Level 2
- Set-up of education & support systems with close links to the ITU



ADU & AMU

- We are unique in that we are the only AMU, that we know of, that has a dedicated team working in a high dependency area within the AMU
- AMU also has a further 10 monitored beds for higher care patients who do not necessarily need a Level 2 bed
- Admissions are predominantly from ED, however we do accept from within the Medical division following Consultant to Consultant referral



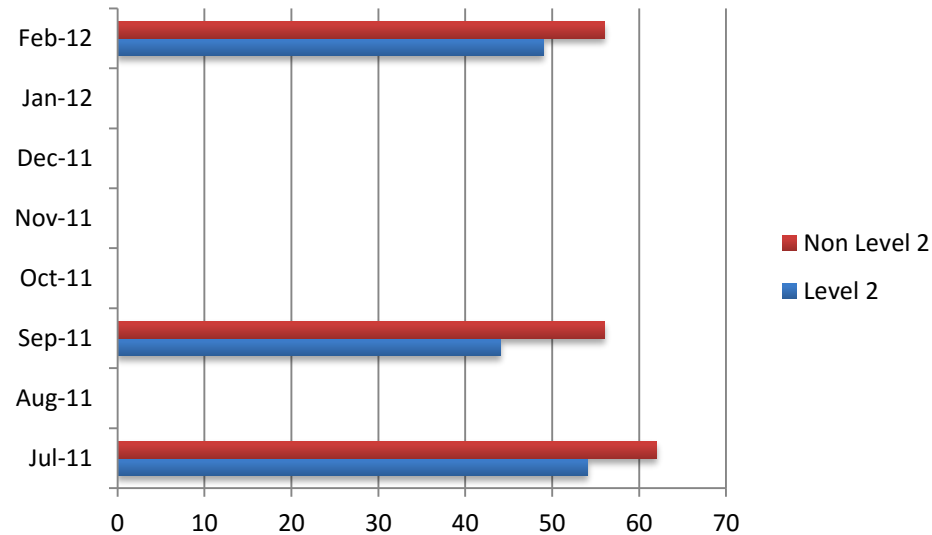
What does our ADU offer?

- 8 bed designated area
- Specialist ADU team
- Advanced monitoring
- Enhanced skill set
- Daily ITU ward rounds
- Link nurses eg. NIV/Trachy
- MDT daily teaching programme
- Assessment outreach to Resus and AMU



How many level 2 patients?

Patients	Aug-15	Oct-15	Mar-16
Level 2	54	44	49
Non Level 2	62	56	56
Total per month	116	100	105



Admitting Diagnosis

August 2015



- Exac COPD
- Cardiac/Heart Failure
- Chest sepsis/Aspiration Pneumonia/CAP
- GI Bleed
- Neuro: Seziures/overdose/decreased GCS
- DKA/HHS
- Exac Asthma
- Sepsis ?cause

October 2015

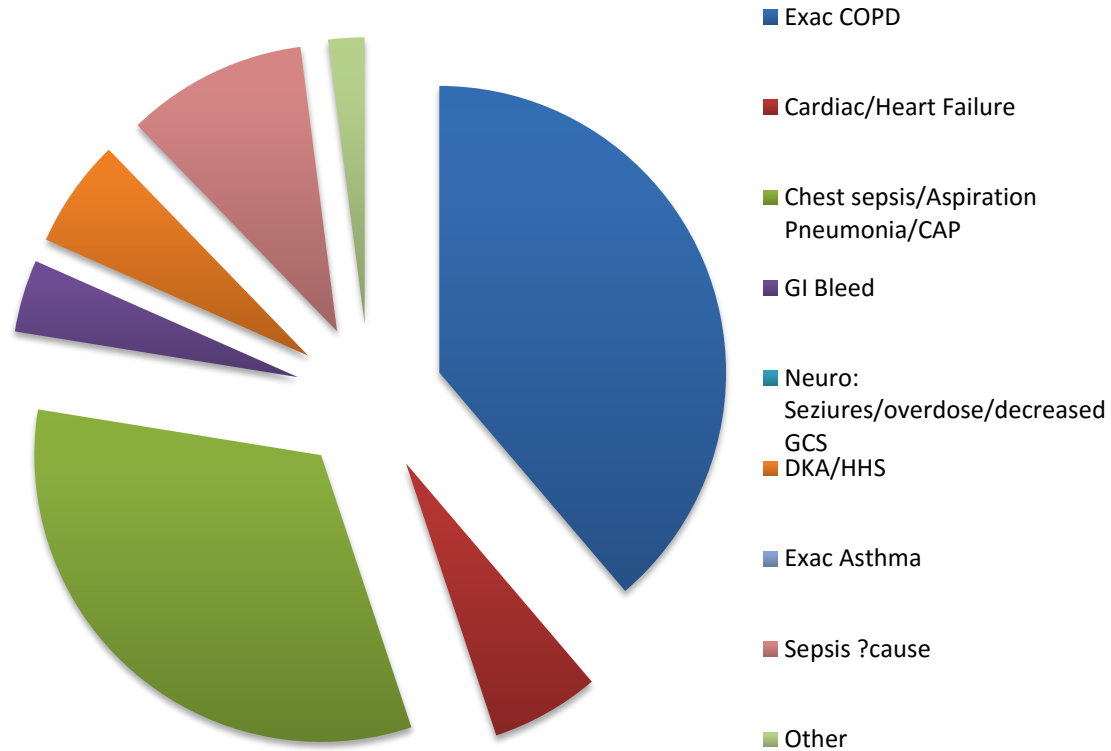


- Exac COPD
- Cardiac/Heart Failure
- Chest sepsis/Aspiration Pneumonia/CAP
- GI Bleed
- Neuro: Seziures/overdose/decreased GCS
- DKA/HHS



Admitting Diagnosis

March 2016



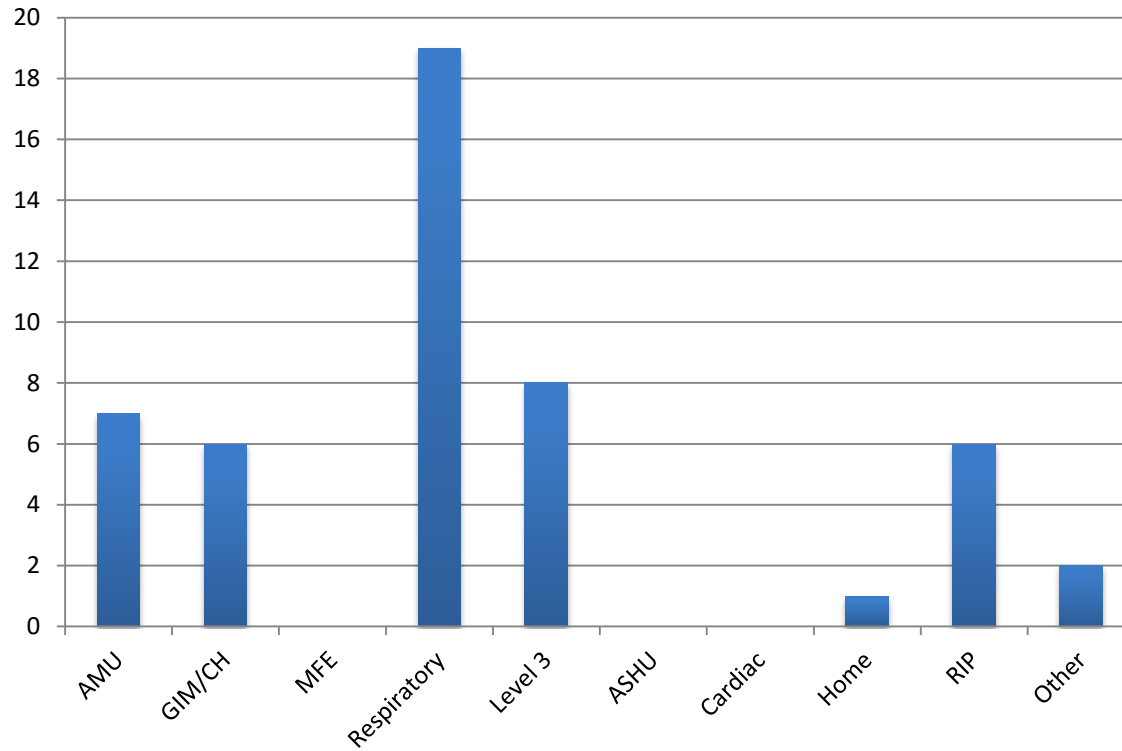
Discharging patients from ADU

Discharge Destination	Aug-15	Oct-15
Acute Medicine Unit	27	30
General Internal Medicine/Caesar Hawkins	25	19
Senior Health	4	3
Respiratory	34	16
Level 3	11	5
Acute Senior Health Unit	1	1
Cardiac	4	3
Home	5	7
RIP	4	10
Other	1	6



Discharging patients from ADU

March 2016



Management of a patient on ADU

Patient referred from Resus to ADU via Med SpR

Assessment of patient in Resus by ADU NIC and member of medical clerking team

Patient clerked in Resus and deemed appropriate for Level 2 bed in discussion with ADU team

On arrival to ADU patient care optimised and continuous monitoring

Observation and assessment recorded on ADU chart +/- patient specific documentation

Referrals to specialities eg ITU, Cardio, Resp Physio
Ongoing assessment re: appropriate place of care



Education and Competencies

- Recruitment of a Practice Development Sister
 - Establishment of daily teaching sessions with MDT input
 - National guidelines & learning resources
-
- National competency framework for critical care nurses
 - Trust competencies & study days



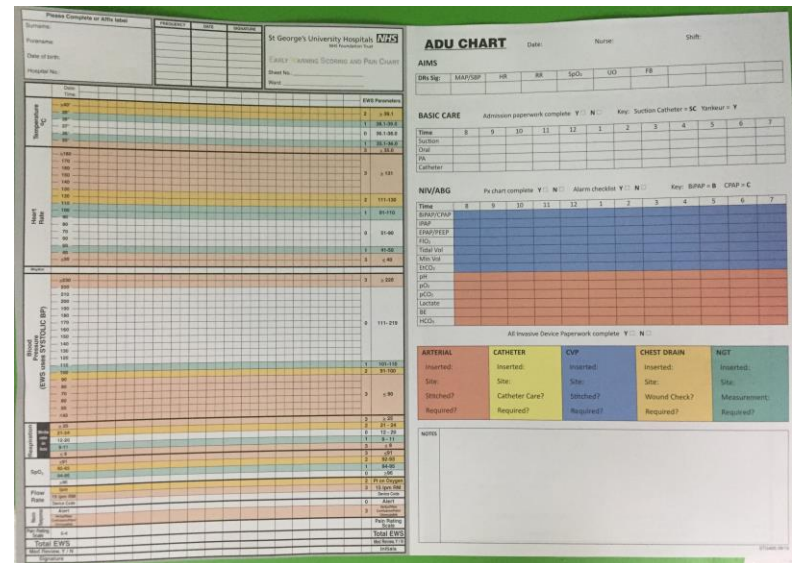
Challenges during development

- More complex and unwell patients
- Staffing issues eg. sickness
- Length of stay affected by downstream
- Funding for further resources
- Trust-wide awareness and education
- Maintaining skill levels across AMU



The future of our ADU

- Team development
- Audit and research drive
- Increase extended skill set
- Standard Operating Procedure
- Ongoing review of changes implemented
- Rotational Nursing Staff – 'setting a standard'



ADU CHART

St George's University Hospital

AIMS

BASIC CARE

NIV/ABG

ARTERIAL

CATHETER

CVP

CHEST DRAIN

NUT



Questions?

Siobhan.burke@stgeorges.nhs.uk

Victoria.mummery@stgeorges.nhs.uk

Katie.warmington@stgeorges.nhs.uk

